

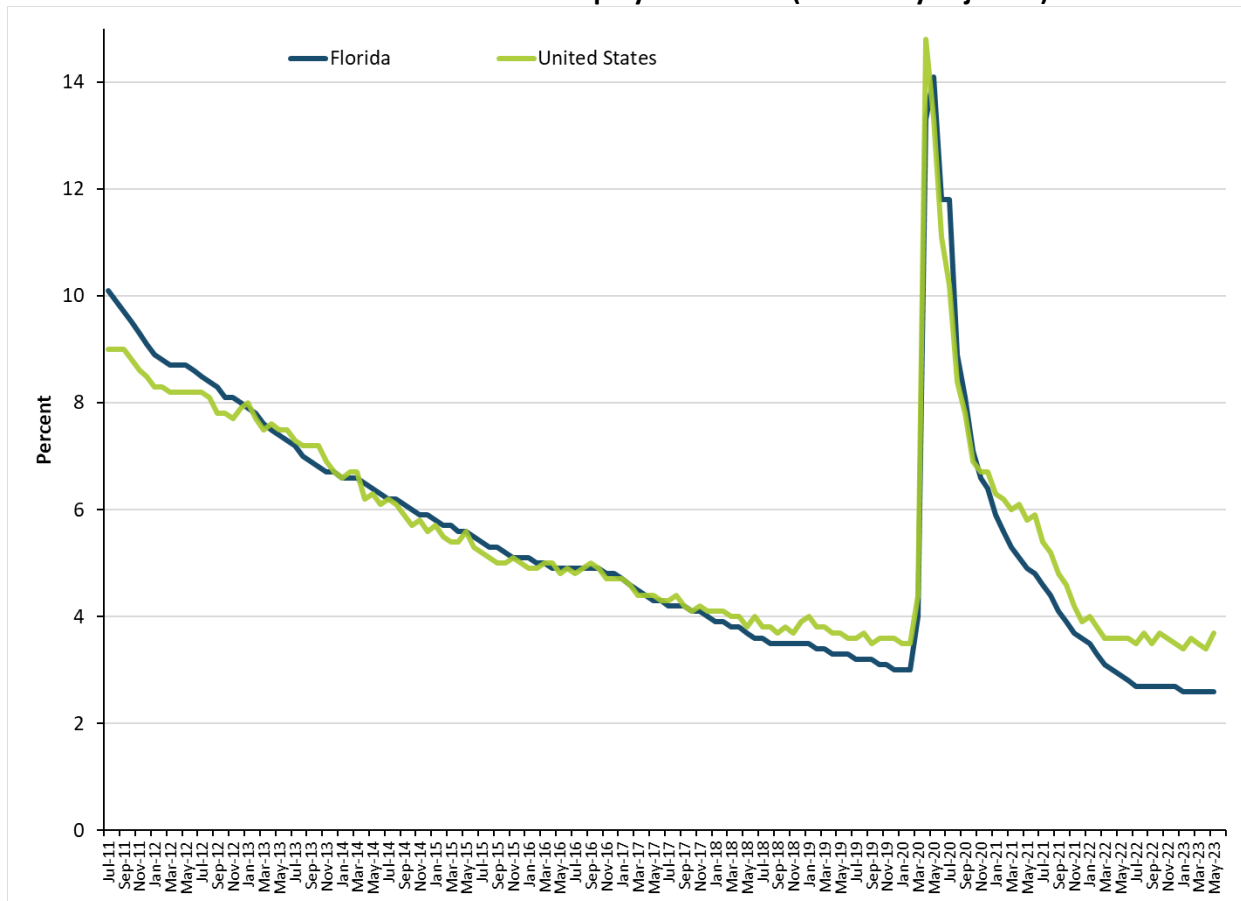
CONTACT: Bureau of Workforce Statistics  
and Economic Research  
(850) 245-7205

### Florida's May Figures Released

Florida's seasonally adjusted unemployment rate was 2.6 percent in May 2023, unchanged from the April 2023 rate, and down 0.3 percentage point from a year ago. There were 287,000 jobless Floridians out of a labor force of 10,998,000. The U.S. unemployment rate was 3.7 percent in May.

Florida's seasonally adjusted total nonagricultural employment was 9,726,100 in May 2023, an increase of 17,500 jobs (+0.2 percent) over the month. The state gained 346,600 jobs over the year, an increase of 3.7 percent. Nationally, the number of jobs rose 2.7 percent over the year.

United States and Florida Unemployment Rates (seasonally adjusted)



Source: U.S. Department of Labor, Bureau of Labor Statistics, Local Area Unemployment Statistics Program, in cooperation with the Florida Department of Economic Opportunity, Bureau of Workforce Statistics and Economic Research.

## Florida's Nonagricultural Employment by Industry (Seasonally Adjusted)

- Nine of ten major industries experienced positive over-the-year job growth in May.
- The industries gaining jobs over the year included education and health services (+99,300 jobs, +7.2 percent); leisure and hospitality (+86,200 jobs, +7.0 percent); professional and business services (+48,500 jobs, +3.1 percent); trade, transportation, and utilities (+48,000 jobs, +2.5 percent); total government (+23,200 jobs, +2.1 percent); financial activities (+18,600 jobs, +2.8 percent); manufacturing (+10,400 jobs, +2.6 percent); other services (+9,500 jobs, +2.8 percent); and construction (+6,200 jobs, +1.0 percent).
- The information industry lost jobs over the year (-3,800 jobs, -2.4 percent).

## Local Area Unemployment Statistics (Not Seasonally Adjusted)

- In May 2023, Monroe County had the state's lowest unemployment rate (1.7 percent), followed by Miami-Dade County (2.2 percent), and Okaloosa County and Gulf County (2.3 percent each).
- Hendry County had the highest unemployment rate (4.1 percent) in Florida in May 2023, followed by Highlands County (4.0 percent), Citrus County (3.9 percent), and Hamilton County, Putnam County and Sumter County (3.7 percent each).

## Area Nonagricultural Employment (Not Seasonally Adjusted)

- In May 2023, 23 of 24 metro areas in Florida had over-the-year job gains. The areas with the largest gains were Tampa-St. Petersburg-Clearwater (+63,300 jobs, +4.3 percent), Miami-Miami Beach-Kendall (+51,100 jobs, +4.1 percent), and Orlando-Kissimmee-Sanford (+50,300 jobs, +3.6 percent).
- The Naples-Immokalee-Marco Island MSA was unchanged over the year.

The unemployment and job growth rates are estimates, which are primarily based on surveys created and mandated by the U.S. Bureau of Labor Statistics in cooperation with the Florida Department of Economic Opportunity.

The unemployment rate is derived from Florida household surveys conducted by the U.S. Census Bureau under contract with the U.S. Bureau of Labor Statistics. The job growth rate is derived from Florida employer surveys conducted by the U.S. Bureau of Labor Statistics.

Both estimates are revised on a monthly basis. In addition, these estimates are benchmarked (revised) annually based on actual counts from Florida's Reemployment Assistance tax records and other data.

Procedures mandated by the U.S. Bureau of Labor Statistics may result in more variable month-to-month changes. For further information, go to: <https://www.bls.gov/sae/>

The mission of the Florida Department of Economic Opportunity is to promote economic prosperity for all Floridians and businesses through successful workforce, community, and economic development strategies. Please visit [www.floridajobs.org](http://www.floridajobs.org) for more information.

*The next Florida Employment and Unemployment release will be July 21, 2023, at 10:00 A.M.*

LABOR FORCE STATUS OF THE CIVILIAN NONINSTITUTIONAL POPULATION  
RELEASE DATE: JUNE 16, 2023

**SEASONALLY ADJUSTED**

	Current Month May 2023	Month Ago April 2023	Year Ago May 2022	Over-the-Month Change		Over-the-Year Change	
				Level	Percent	Level	Percent

**STATE OF FLORIDA**

Civilian Noninstitutional							
Population 16+	18,502,000	18,467,000	18,076,000	35,000	0.2	426,000	2.4
Civilian Labor Force	10,998,000	10,960,000	10,752,000	38,000	0.3	246,000	2.3
Employment	10,711,000	10,679,000	10,442,000	32,000	0.3	269,000	2.6
Unemployment	287,000	281,000	309,000	6,000	2.1	-22,000	-7.1
Unemployment Rate (%)	2.6	2.6	2.9	0.0	--	-0.3	--

**UNITED STATES**

Civilian Noninstitutional							
Population 16+	266,618,000	266,443,000	263,679,000	175,000	0.1	2,939,000	1.1
Civilian Labor Force	166,818,000	166,688,000	164,278,000	130,000	0.1	2,540,000	1.5
Employment	160,721,000	161,031,000	158,299,000	-310,000	-0.2	2,422,000	1.5
Unemployment	6,097,000	5,657,000	5,979,000	440,000	7.8	118,000	2.0
Unemployment Rate (%)	3.7	3.4	3.6	0.3	--	0.1	--

**NOT SEASONALLY ADJUSTED**

	Current Month May 2023	Month Ago April 2023	Year Ago May 2022	Over-the-Month Change		Over-the-Year Change	
				Level	Percent	Level	Percent

**STATE OF FLORIDA**

Civilian Noninstitutional							
Population 16+	18,502,000	18,467,000	18,076,000	35,000	0.2	426,000	2.4
Civilian Labor Force	11,022,000	11,012,000	10,741,000	10,000	0.1	281,000	2.6
Employment	10,726,000	10,759,000	10,449,000	-33,000	-0.3	277,000	2.7
Unemployment	296,000	253,000	292,000	43,000	17.0	4,000	1.4
Unemployment Rate (%)	2.7	2.3	2.7	0.4	--	0.0	--

**UNITED STATES**

Civilian Noninstitutional							
Population 16+	266,618,000	266,443,000	263,679,000	175,000	0.1	2,939,000	1.1
Civilian Labor Force	166,702,000	166,221,000	164,157,000	481,000	0.3	2,545,000	1.6
Employment	161,002,000	161,075,000	158,609,000	-73,000	*	2,393,000	1.5
Unemployment	5,700,000	5,146,000	5,548,000	554,000	10.8	152,000	2.7
Unemployment Rate (%)	3.4	3.1	3.4	0.3	--	0.0	--

\* = less than 0.1 percent

Note: All estimates except unemployment rates are rounded to the nearest thousand. Items may not add to totals or compute to displayed percentages due to rounding. All data are subject to revision.

Source: U.S. Department of Labor, Bureau of Labor Statistics, Local Area Unemployment Statistics Program, in cooperation with the Florida Department of Economic Opportunity, Bureau of Workforce Statistics and Economic Research.

**Nonagricultural Employment in Florida  
Seasonally Adjusted**

	May 2023	April 2023	May 2022	Over-the-Month Change		Over-the-Year Change	
				Level	Percent	Level	Percent
Total Nonagricultural Employment	9,726,100	9,708,600	9,379,500	17,500	0.2	346,600	3.7
Total Private	8,613,500	8,596,300	8,290,100	17,200	0.2	323,400	3.9
Goods Producing	1,028,300	1,029,800	1,011,200	-1,500	-0.1	17,100	1.7
Mining, Logging, and Construction	610,200	610,800	603,500	-600	-0.1	6,700	1.1
Construction	604,400	604,900	598,200	-500	-0.1	6,200	1.0
Manufacturing	418,100	419,000	407,700	-900	-0.2	10,400	2.6
Durable Goods	292,300	292,500	279,400	-200	-0.1	12,900	4.6
Nondurable Goods	125,800	126,500	128,300	-700	-0.6	-2,500	-1.9
Service Producing	8,697,800	8,678,800	8,368,300	19,000	0.2	329,500	3.9
Private Service Providing	7,585,200	7,566,500	7,278,900	18,700	0.2	306,300	4.2
Trade, Transportation, and Utilities	1,973,900	1,975,500	1,925,900	-1,600	-0.1	48,000	2.5
Wholesale Trade	389,500	392,700	376,600	-3,200	-0.8	12,900	3.4
Retail Trade	1,149,600	1,149,300	1,127,600	300	*	22,000	2.0
Transportation, Warehousing, and Utilities	434,800	433,500	421,700	1,300	0.3	13,100	3.1
Information	152,300	153,100	156,100	-800	-0.5	-3,800	-2.4
Financial Activities	682,300	679,700	663,700	2,600	0.4	18,600	2.8
Finance and Insurance	457,000	457,600	452,500	-600	-0.1	4,500	1.0
Real Estate, Rental, and Leasing	225,300	222,100	211,200	3,200	1.4	14,100	6.7
Professional and Business Services	1,625,900	1,619,700	1,577,400	6,200	0.4	48,500	3.1
Professional and Technical Services	742,200	737,400	704,300	4,800	0.7	37,900	5.4
Management of Companies and Enterprises	132,400	131,500	124,800	900	0.7	7,600	6.1
Administrative and Waste Services	751,300	750,800	748,300	500	0.1	3,000	0.4
Education and Health Services	1,480,500	1,471,700	1,381,200	8,800	0.6	99,300	7.2
Educational Services	200,800	199,500	189,100	1,300	0.7	11,700	6.2
Health Care and Social Assistance	1,279,700	1,272,200	1,192,100	7,500	0.6	87,600	7.3
Leisure and Hospitality	1,318,300	1,314,600	1,232,100	3,700	0.3	86,200	7.0
Arts, Entertainment, and Recreation	256,100	257,200	235,600	-1,100	-0.4	20,500	8.7
Accommodation and Food Services	1,062,200	1,057,400	996,500	4,800	0.5	65,700	6.6
Other Services	352,000	352,200	342,500	-200	-0.1	9,500	2.8

Source: U.S. Department of Labor, Bureau of Labor Statistics, Current Employment Statistics Program.

Prepared by: Florida Department of Economic Opportunity, Bureau of Workforce Statistics and Economic Research.

**Nonagricultural Employment in Florida  
Seasonally Adjusted**

	May 2023	April 2023	May 2022	Over-the-Month Change		Over-the-Year Change	
				Level	Percent	Level	Percent
Total Government	1,112,600	1,112,300	1,089,400	300	*	23,200	2.1
Federal Government	154,400	154,200	149,400	200	0.1	5,000	3.3
State Government	242,500	241,900	235,900	600	0.2	6,600	2.8
Local Government	715,700	716,200	704,100	-500	-0.1	11,600	1.6

Released: June 16, 2023

p = preliminary, r = revised

\* - less than 0.1 percent

Note: Sum of detail may not equal totals due to rounding or the exclusion of certain industries from publication. All data are subject to revision.

**NONAGRICULTURAL EMPLOYMENT IN FLORIDA  
STATEWIDE (Not Seasonally Adjusted)**

Released June 16, 2023

Series	Industry Title	May 2023	April 2023	May 2022	Change from		Apr 2023 to May 2023 Level	May 2022 to May 2023 Level	Percent	Percent
					Level	Percent				
0000000	Total Nonfarm	9,719,200	9,717,800	9,387,700	1,400	0.0%	331,500	3.5%		
05000000	Total Private	8,595,300	8,585,900	8,288,400	9,400	0.1%	306,900	3.7%		
06000000	Goods Producing	1,029,900	1,029,600	1,011,700	300	0.0%	18,200	1.8%		
07000000	Service-Providing	8,689,300	8,688,200	8,376,000	1,100	0.0%	313,300	3.7%		
08000000	Private Service Providing	7,565,400	7,556,300	7,276,700	9,100	0.1%	288,700	4.0%		
10000000	Mining and Logging	5,800	5,800	5,600	0	0.0%	200	3.6%		
10212000	Mining (except Oil and Gas)	3,400	3,400	3,300	0	0.0%	100	3.0%		
15000000	Mining, Logging and Construction	612,600	610,000	604,200	2,600	0.4%	8,400	1.4%		
20000000	Construction	606,800	604,200	598,600	2,600	0.4%	8,200	1.4%		
20236000	Construction of Buildings	123,400	122,600	121,500	800	0.7%	1,900	1.6%		
20237000	Heavy and Civil Engineering Construction	77,100	76,600	77,400	500	0.7%	-300	-0.4%		
20238000	Specialty Trade Contractors	406,300	405,000	399,700	1,300	0.3%	6,600	1.7%		
20238200	Building Equipment Contractors	177,400	175,500	174,200	1,900	1.1%	3,200	1.8%		
30000000	Manufacturing	417,300	419,600	407,500	-2,300	-0.6%	9,800	2.4%		
31000000	Durable Goods	291,000	292,400	279,200	-1,400	-0.5%	11,800	4.2%		
31332000	Fabricated Metal Product Manufacturing	46,400	46,300	43,800	100	0.2%	2,600	5.9%		
31334000	Computer and Electronic Product Manufacturing	47,500	47,500	45,000	0	0.0%	2,500	5.6%		
31334200	Communications Equipment Manufacturing	5,800	5,800	5,600	0	0.0%	200	3.6%		
31336000	Transportation Equipment Manufacturing	58,200	57,700	53,500	500	0.9%	4,700	8.8%		
31336400	Aerospace Product and Parts Manufacturing	31,800	31,600	28,800	200	0.6%	3,000	10.4%		
31339000	Miscellaneous Manufacturing	36,600	36,800	35,200	-200	-0.5%	1,400	4.0%		
32000000	Non-Durable Goods	126,300	127,200	128,300	-900	-0.7%	-2,000	-1.6%		
32311000	Food Manufacturing	35,100	35,400	35,600	-300	-0.9%	-500	-1.4%		
32312000	Beverage and Tobacco Product Manufacturing	13,600	13,700	13,700	-100	-0.7%	-100	-0.7%		
32322000	Paper Manufacturing	7,600	7,700	7,900	-100	-1.3%	-300	-3.8%		
32323000	Printing and Related Support Activities	16,600	16,600	16,400	0	0.0%	200	1.2%		
32325000	Chemical Manufacturing	27,700	27,800	27,900	-100	-0.4%	-200	-0.7%		
40000000	Trade, Transportation, and Utilities	1,958,700	1,962,300	1,908,900	-3,600	-0.2%	49,800	2.6%		
<b>41000000</b>	<b>Wholesale Trade</b>	<b>389,000</b>	<b>391,700</b>	<b>376,500</b>	<b>-2,700</b>	<b>-0.7%</b>	<b>12,500</b>	<b>3.3%</b>		
41423000	Merchant Wholesalers, Durable Goods	211,000	210,300	204,400	700	0.3%	6,600	3.2%		
41423400	Professional and Commercial Equipment and Supplies Merchant Wholesalers	57,000	57,000	55,100	0	0.0%	1,900	3.5%		
41423600	Household Appliances and Electrical and Electronic Goods Merchant Wholesalers	24,600	24,600	23,800	0	0.0%	800	3.4%		
41423800	Machinery, Equipment, and Supplies Merchant Wholesalers	37,400	37,600	35,300	-200	-0.5%	2,100	6.0%		
41424000	Merchant Wholesalers, Nondurable Goods	154,400	157,500	147,000	-3,100	-2.0%	7,400	5.0%		
41424400	Grocery and Related Product Merchant Wholesalers	60,500	62,100	58,900	-1,600	-2.6%	1,600	2.7%		
41425000	Wholesale Trade Agents and Brokers	23,600	23,900	25,100	-300	-1.3%	-1,500	-6.0%		
<b>42000000</b>	<b>Retail Trade</b>	<b>1,140,900</b>	<b>1,142,500</b>	<b>1,119,700</b>	<b>-1,600</b>	<b>-0.1%</b>	<b>21,200</b>	<b>1.9%</b>		
42441000	Motor Vehicle and Parts Dealers	161,500	161,500	156,600	0	0.0%	4,900	3.1%		
42441100	Automobile Dealers	101,300	101,300	98,000	0	0.0%	3,300	3.4%		
42444000	Building Material and Garden Equipment and Supplies Dealers	103,400	103,800	101,100	-400	-0.4%	2,300	2.3%		
42445000	Food and Beverage Retailers	261,000	260,800	252,700	200	0.1%	8,300	3.3%		
42449000	Furniture, Home Furnishings, Electronics, and Appliance Retailers	70,600	71,200	72,400	-600	-0.8%	-1,800	-2.5%		

Source: U.S. Department of Labor, Bureau of Labor Statistics, Current Employment Statistics Program.

Prepared by: Florida Department of Economic Opportunity, Bureau of Workforce Statistics and Economic Research.

**NONAGRICULTURAL EMPLOYMENT IN FLORIDA  
STATEWIDE (Not Seasonally Adjusted)**

Released June 16, 2023

Series	Industry Title	May 2023	April 2023	May 2022	Change from		Apr 2023 to May 2023 Level	May 2022 to May 2023 Level	Percent	Percent
					Level	Percent				
42449100	Furniture and Home Furnishings Retailers	36,500	36,600	37,400	-100	-0.3%	-900	-2.4%		
42449200	Electronics and Appliance Retailers	34,100	34,600	35,000	-500	-1.5%	-900	-2.6%		
42455000	General Merchandise Retailers	215,900	217,200	211,500	-1,300	-0.6%	4,400	2.1%		
42455100	Department Stores	66,300	66,300	64,900	0	0.0%	1,400	2.2%		
42455200	Warehouse Clubs, Supercenters, and Other General Merchandise Retailers	149,600	150,900	146,600	-1,300	-0.9%	3,000	2.1%		
42456000	Health and Personal Care Retailers	88,700	89,100	87,300	-400	-0.5%	1,400	1.6%		
42457000	Gasoline Stations and Fuel Dealers	48,000	48,000	47,800	0	0.0%	200	0.4%		
42458000	Clothing, Clothing Accessories, Shoe, and Jewelry Retailers	93,800	93,200	90,600	600	0.6%	3,200	3.5%		
42459000	Sporting Goods, Hobby, Musical Instrument, Book, and Miscellaneous Retailers	98,000	97,700	99,700	300	0.3%	-1,700	-1.7%		
<b>43000000</b>	<b>Transportation, Warehousing, and Utilities</b>	<b>428,800</b>	<b>428,100</b>	<b>412,700</b>	<b>700</b>	<b>0.2%</b>	<b>16,100</b>	<b>3.9%</b>		
43220000	Utilities	24,100	24,100	23,300	0	0.0%	800	3.4%		
43400089	Transportation and Warehousing	404,700	404,000	389,400	700	0.2%	15,300	3.9%		
43481000	Air Transportation	57,000	56,400	53,500	600	1.1%	3,500	6.5%		
43483000	Water Transportation	18,900	18,700	16,300	200	1.1%	2,600	16.0%		
43484000	Truck Transportation	69,700	70,100	68,100	-400	-0.6%	1,600	2.4%		
43488000	Support Activities for Transportation	69,600	68,800	68,000	800	1.2%	1,600	2.4%		
43492000	Couriers and Messengers	61,000	61,000	60,400	0	0.0%	600	1.0%		
43493000	Warehousing and Storage	104,100	105,600	100,600	-1,500	-1.4%	3,500	3.5%		
50000000	Information	151,800	152,600	156,000	-800	-0.5%	-4,200	-2.7%		
50513000	Publishing Industries	41,100	41,900	42,400	-800	-1.9%	-1,300	-3.1%		
50516000	Broadcasting and Content Providers	16,800	16,900	16,300	-100	-0.6%	500	3.1%		
50517000	Telecommunications	46,800	46,800	47,700	0	0.0%	-900	-1.9%		
50517111	Wired Telecommunications Carriers	35,100	35,100	35,900	0	0.0%	-800	-2.2%		
50518000	Computing Infrastructure Providers, Data Processing, Web Hosting, and Related	29,000	29,100	28,100	-100	-0.3%	900	3.2%		
55000000	Financial Activities	679,700	676,000	662,300	3,700	0.6%	17,400	2.6%		
<b>55520000</b>	<b>Finance and Insurance</b>	<b>454,700</b>	<b>455,300</b>	<b>450,900</b>	<b>-600</b>	<b>-0.1%</b>	<b>3,800</b>	<b>0.8%</b>		
55522000	Credit Intermediation and Related Activities including Monetary Authorities - Cent	182,400	183,200	183,700	-800	-0.4%	-1,300	-0.7%		
55522100	Depository Credit Intermediation including Monetary Authorities - Central Bank	118,200	119,500	116,500	-1,300	-1.1%	1,700	1.5%		
55524000	Insurance Carriers and Related Activities	210,000	209,100	207,700	900	0.4%	2,300	1.1%		
55524100	Insurance Carriers	101,400	100,700	98,100	700	0.7%	3,300	3.4%		
55524200	Agencies, Brokerages, and Other Insurance Related Activities	108,600	108,400	109,600	200	0.2%	-1,000	-0.9%		
<b>55530000</b>	<b>Real Estate and Rental and Leasing</b>	<b>225,000</b>	<b>220,700</b>	<b>211,400</b>	<b>4,300</b>	<b>2.0%</b>	<b>13,600</b>	<b>6.4%</b>		
55531000	Real Estate	175,900	172,000	165,200	3,900	2.3%	10,700	6.5%		
60000000	Professional and Business Services	1,627,900	1,620,800	1,574,400	7,100	0.4%	53,500	3.4%		
<b>60540000</b>	<b>Professional, Scientific, and Technical Services</b>	<b>741,000</b>	<b>740,800</b>	<b>703,300</b>	<b>200</b>	<b>0.0%</b>	<b>37,700</b>	<b>5.4%</b>		
60541100	Legal Services	112,800	113,100	109,600	-300	-0.3%	3,200	2.9%		
60541200	Accounting, Tax Preparation, Bookkeeping, and Payroll Services	91,700	93,900	83,700	-2,200	-2.3%	8,000	9.6%		
60541300	Architectural, Engineering, and Related Services	106,900	104,800	100,300	2,100	2.0%	6,600	6.6%		
60541500	Computer Systems Design and Related Services	135,800	137,100	132,800	-1,300	-1.0%	3,000	2.3%		
60541600	Management, Scientific, and Technical Consulting Services	161,200	160,900	151,000	300	0.2%	10,200	6.8%		
<b>60550000</b>	<b>Management of Companies and Enterprises</b>	<b>131,200</b>	<b>130,600</b>	<b>124,400</b>	<b>600</b>	<b>0.5%</b>	<b>6,800</b>	<b>5.5%</b>		
<b>60560000</b>	<b>Administrative and Support and Waste Management and Remediation Servi</b>	<b>755,700</b>	<b>749,400</b>	<b>746,700</b>	<b>6,300</b>	<b>0.8%</b>	<b>9,000</b>	<b>1.2%</b>		

Source: U.S. Department of Labor, Bureau of Labor Statistics, Current Employment Statistics Program.

Prepared by: Florida Department of Economic Opportunity, Bureau of Workforce Statistics and Economic Research.

**NONAGRICULTURAL EMPLOYMENT IN FLORIDA  
STATEWIDE (Not Seasonally Adjusted)**

Released June 16, 2023

Series	Industry Title	May 2023	April 2023	May 2022	Change from		May 2022 to May 2023 Level	May 2022 to May 2023 Percent
					Apr 2023 to May 2023 Level	Percent		
60561000	Administrative and Support Services	724,100	718,500	716,900	5,600	0.8%	7,200	1.0%
60561300	Employment Services	249,900	249,100	262,500	800	0.3%	-12,600	-4.8%
60561400	Business Support Services	79,300	77,800	80,000	1,500	1.9%	-700	-0.9%
60561500	Travel Arrangement and Reservation Services	27,400	27,400	25,900	0	0.0%	1,500	5.8%
60561600	Investigation and Security Services	77,800	78,700	77,900	-900	-1.1%	-100	-0.1%
60561700	Services to Buildings and Dwellings	207,700	205,600	192,100	2,100	1.0%	15,600	8.1%
60562000	Waste Management and Remediation Services	31,600	30,900	29,800	700	2.3%	1,800	6.0%
65000000	Private Education and Health Services	1,476,600	1,471,400	1,383,300	5,200	0.4%	93,300	6.7%
<b>65610000</b>	<b>Private Educational Services</b>	<b>199,100</b>	<b>204,500</b>	<b>190,200</b>	<b>-5,400</b>	<b>-2.6%</b>	<b>8,900</b>	<b>4.7%</b>
65611100	Private Elementary and Secondary Schools	78,400	79,500	74,400	-1,100	-1.4%	4,000	5.4%
65611300	Private Colleges, Universities, and Professional Schools	62,200	65,800	59,100	-3,600	-5.5%	3,100	5.3%
<b>65620000</b>	<b>Health Care and Social Assistance</b>	<b>1,277,500</b>	<b>1,266,900</b>	<b>1,193,100</b>	<b>10,600</b>	<b>0.8%</b>	<b>84,400</b>	<b>7.1%</b>
65621000	Ambulatory Health Care Services	605,700	597,900	566,800	7,800	1.3%	38,900	6.9%
65621100	Offices of Physicians	251,800	249,400	242,200	2,400	1.0%	9,600	4.0%
65621600	Home Health Care Services	85,500	84,500	75,500	1,000	1.2%	10,000	13.3%
65622000	Hospitals	340,200	338,100	312,700	2,100	0.6%	27,500	8.8%
<b>65623000</b>	<b>Nursing and Residential Care Facilities</b>	<b>177,400</b>	<b>176,500</b>	<b>169,700</b>	<b>900</b>	<b>0.5%</b>	<b>7,700</b>	<b>4.5%</b>
65623100	Nursing Care Facilities (Skilled Nursing Facilities)	82,200	81,500	79,100	700	0.9%	3,100	3.9%
65623300	Continuing Care Retirement Communities and Assisted Living Facilities for the Elderly	66,100	65,900	61,700	200	0.3%	4,400	7.1%
65624000	Social Assistance	154,200	154,400	143,900	-200	-0.1%	10,300	7.2%
70000000	Leisure and Hospitality	1,320,700	1,322,300	1,249,200	-1,600	-0.1%	71,500	5.7%
<b>70710000</b>	<b>Arts, Entertainment, and Recreation</b>	<b>253,600</b>	<b>260,800</b>	<b>235,800</b>	<b>-7,200</b>	<b>-2.8%</b>	<b>17,800</b>	<b>7.6%</b>
70713000	Amusement, Gambling, and Recreation Industries	207,400	210,300	187,600	-2,900	-1.4%	19,800	10.6%
70713100	Amusement Parks and Arcades	89,300	88,300	76,300	1,000	1.1%	13,000	17.0%
<b>70720000</b>	<b>Accommodation and Food Services</b>	<b>1,067,100</b>	<b>1,061,500</b>	<b>1,013,400</b>	<b>5,600</b>	<b>0.5%</b>	<b>53,700</b>	<b>5.3%</b>
70721000	Accommodation	188,100	187,600	173,400	500	0.3%	14,700	8.5%
70722000	Food Services and Drinking Places	879,000	873,900	840,000	5,100	0.6%	39,000	4.6%
80000000	Other Services	350,000	350,900	342,600	-900	-0.3%	7,400	2.2%
80811000	Repair and Maintenance	91,800	93,100	90,500	-1,300	-1.4%	1,300	1.4%
80811100	Automotive Repair and Maintenance	61,800	62,600	60,000	-800	-1.3%	1,800	3.0%
80812000	Personal and Laundry Services	103,200	104,000	102,300	-800	-0.8%	900	0.9%
80813000	Religious, Grantmaking, Civic, Professional, and Similar Organizations	155,000	153,800	149,800	1,200	0.8%	5,200	3.5%
90000000	Government	1,123,900	1,131,900	1,099,300	-8,000	-0.7%	24,600	2.2%
<b>90910000</b>	<b>Federal Government</b>	<b>153,700</b>	<b>154,800</b>	<b>148,700</b>	<b>-1,100</b>	<b>-0.7%</b>	<b>5,000</b>	<b>3.4%</b>
<b>90920000</b>	<b>State Government</b>	<b>238,000</b>	<b>246,600</b>	<b>232,100</b>	<b>-8,600</b>	<b>-3.5%</b>	<b>5,900</b>	<b>2.5%</b>
90921611	State Government Educational Services	131,900	140,500	127,000	-8,600	-6.1%	4,900	3.9%
90922000	State Government Excluding Education	106,100	106,100	105,100	0	0.0%	1,000	1.0%
<b>90930000</b>	<b>Local Government</b>	<b>732,200</b>	<b>730,500</b>	<b>718,500</b>	<b>1,700</b>	<b>0.2%</b>	<b>13,700</b>	<b>1.9%</b>
90931611	Local Government Educational Services	349,200	348,400	346,300	800	0.2%	2,900	0.8%
90932000	Local Government excluding Educational Services	383,000	382,100	372,200	900	0.2%	10,800	2.9%

Note: Employment estimates have been rounded to the nearest hundred. Sum of detail may not equal totals due to rounding or the exclusion of certain series.

Source: U.S. Department of Labor, Bureau of Labor Statistics, Current Employment Statistics Program.

Prepared by: Florida Department of Economic Opportunity, Bureau of Workforce Statistics and Economic Research.



**NONAGRICULTURAL EMPLOYMENT IN FLORIDA  
STATEWIDE (Not Seasonally Adjusted)**

Released June 16, 2023

Series	Industry Title	May 2023	April 2023	May 2022	Change from		Change from	
					Apr 2023 to May 2023 Level	Apr 2023 to May 2023 Percent	May 2022 to May 2023 Level	May 2022 to May 2023 Percent

of certain industries from publication. All data are subject to revision.

Source: U.S. Department of Labor, Bureau of Labor Statistics, Current Employment Statistics Program.

Prepared by: Florida Department of Economic Opportunity, Bureau of Workforce Statistics and Economic Research.

STATE OF FLORIDA  
LOCAL AREA UNEMPLOYMENT STATISTICS BY COUNTY  
(NOT SEASONALLY ADJUSTED)

COUNTY	MAY 2023				APRIL 2023				MAY 2022			
	LABOR FORCE	EMPLOY- MENT	UNEMPLOYMENT LEVEL	UNEMPLOYMENT RATE	LABOR FORCE	EMPLOY- MENT	UNEMPLOYMENT LEVEL	UNEMPLOYMENT RATE	LABOR FORCE	EMPLOY- MENT	UNEMPLOYMENT LEVEL	UNEMPLOYMENT RATE
Alachua County	144,067	139,996	4,071	2.8%	147,018	143,556	3,462	2.4%	139,827	136,030	3,797	2.7%
Baker County	13,125	12,776	349	2.7%	13,022	12,732	290	2.2%	12,600	12,271	329	2.6%
Bay County	90,507	88,339	2,168	2.4%	89,959	88,099	1,860	2.1%	88,365	86,227	2,138	2.4%
Bradford County	11,270	10,966	304	2.7%	11,243	10,983	260	2.3%	10,980	10,661	319	2.9%
Brevard County	303,433	295,104	8,329	2.7%	301,611	294,518	7,093	2.4%	295,209	287,269	7,940	2.7%
Broward County	1,086,370	1,057,751	28,619	2.6%	1,082,552	1,057,893	24,659	2.3%	1,065,995	1,037,185	28,810	2.7%
Calhoun County	4,985	4,846	139	2.8%	4,957	4,830	127	2.6%	4,887	4,740	147	3.0%
Charlotte County	78,529	76,145	2,384	3.0%	78,522	76,447	2,075	2.6%	76,763	74,480	2,283	3.0%
Citrus County	51,179	49,189	1,990	3.9%	50,579	48,866	1,713	3.4%	49,772	47,902	1,870	3.8%
Clay County	117,446	114,434	3,012	2.6%	116,570	114,039	2,531	2.2%	112,633	109,828	2,805	2.5%
Collier County	190,375	185,538	4,837	2.5%	191,132	187,080	4,052	2.1%	190,922	186,281	4,641	2.4%
Columbia County	29,919	29,036	883	3.0%	29,749	28,970	779	2.6%	29,632	28,720	912	3.1%
DeSoto County	14,581	14,147	434	3.0%	14,091	13,724	367	2.6%	14,259	13,835	424	3.0%
Dixie County	5,973	5,787	186	3.1%	5,895	5,731	164	2.8%	5,931	5,750	181	3.1%
Duval County	530,959	516,120	14,839	2.8%	527,247	514,456	12,791	2.4%	510,632	496,010	14,622	2.9%
Escambia County	152,279	148,043	4,236	2.8%	151,688	148,085	3,603	2.4%	149,408	145,170	4,238	2.8%
Flagler County	52,282	50,542	1,740	3.3%	52,070	50,583	1,487	2.9%	50,181	48,618	1,563	3.1%
Franklin County	5,002	4,876	126	2.5%	5,015	4,911	104	2.1%	4,934	4,817	117	2.4%
Gadsden County	19,370	18,701	669	3.5%	19,412	18,815	597	3.1%	18,987	18,309	678	3.6%
Gilchrist County	7,522	7,281	241	3.2%	7,605	7,412	193	2.5%	7,341	7,133	208	2.8%
Glades County	5,450	5,281	169	3.1%	5,431	5,290	141	2.6%	5,195	5,042	153	2.9%
Gulf County	5,588	5,462	126	2.3%	5,552	5,444	108	1.9%	5,448	5,326	122	2.2%
Hamilton County	4,212	4,057	155	3.7%	4,160	4,029	131	3.1%	4,137	3,979	158	3.8%
Hardee County	9,016	8,696	320	3.5%	8,938	8,662	276	3.1%	8,779	8,472	307	3.5%
Hendry County	15,625	14,987	638	4.1%	15,571	15,052	519	3.3%	15,657	15,042	615	3.9%
Hernando County	79,777	77,058	2,719	3.4%	79,250	76,935	2,315	2.9%	76,706	74,138	2,568	3.3%
Highlands County	36,952	35,490	1,462	4.0%	36,824	35,630	1,194	3.2%	36,169	34,806	1,363	3.8%
Hillsborough County	834,848	812,818	22,030	2.6%	829,990	811,129	18,861	2.3%	801,518	780,641	20,877	2.6%
Holmes County	7,248	7,044	204	2.8%	7,199	7,028	171	2.4%	7,060	6,855	205	2.9%
Indian River County	68,692	66,491	2,201	3.2%	68,638	66,778	1,860	2.7%	68,299	66,092	2,207	3.2%
Jackson County	16,943	16,417	526	3.1%	16,796	16,340	456	2.7%	16,790	16,268	522	3.1%
Jefferson County	5,830	5,661	169	2.9%	5,847	5,704	143	2.4%	5,710	5,532	178	3.1%
Lafayette County	2,886	2,804	82	2.8%	2,867	2,798	69	2.4%	2,826	2,741	85	3.0%
Lake County	176,080	171,108	4,972	2.8%	175,787	171,534	4,253	2.4%	170,193	165,333	4,860	2.9%
Lee County	388,267	377,322	10,945	2.8%	389,096	379,656	9,440	2.4%	373,187	363,218	9,969	2.7%
Leon County	162,491	157,821	4,670	2.9%	163,008	159,045	3,963	2.4%	159,005	154,462	4,543	2.9%
Levy County	17,333	16,803	530	3.1%	17,308	16,849	459	2.7%	17,143	16,579	564	3.3%
Liberty County	2,711	2,636	75	2.8%	2,704	2,637	67	2.5%	2,640	2,560	80	3.0%
Madison County	7,966	7,746	220	2.8%	7,917	7,723	194	2.5%	7,912	7,659	253	3.2%

Source: U.S. Department of Labor, Bureau of Labor Statistics, Local Area Unemployment Statistics Program, in cooperation with the Florida Department of Economic Opportunity, Bureau of Workforce Statistics and Economic Research.

STATE OF FLORIDA  
LOCAL AREA UNEMPLOYMENT STATISTICS BY COUNTY  
(NOT SEASONALLY ADJUSTED)

COUNTY	MAY 2023				APRIL 2023				MAY 2022			
	LABOR FORCE	EMPLOY- MENT	UNEMPLOYMENT LEVEL	UNEMPLOYMENT RATE	LABOR FORCE	EMPLOY- MENT	UNEMPLOYMENT LEVEL	UNEMPLOYMENT RATE	LABOR FORCE	EMPLOY- MENT	UNEMPLOYMENT LEVEL	UNEMPLOYMENT RATE
Manatee County	191,828	186,595	5,233	2.7%	191,556	187,059	4,497	2.3%	187,008	182,053	4,955	2.6%
Marion County	152,015	146,978	5,037	3.3%	151,228	146,926	4,302	2.8%	148,254	143,431	4,823	3.3%
Martin County	78,328	76,331	1,997	2.5%	78,030	76,338	1,692	2.2%	76,345	74,438	1,907	2.5%
Miami-Dade County	1,364,211	1,334,724	29,487	2.2%	1,387,286	1,362,196	25,090	1.8%	1,362,628	1,328,690	33,938	2.5%
Monroe County	51,366	50,501	865	1.7%	51,494	50,749	745	1.4%	49,477	48,635	842	1.7%
Nassau County	46,382	45,211	1,171	2.5%	46,083	45,076	1,007	2.2%	44,553	43,504	1,049	2.4%
Okaloosa County	106,420	104,009	2,411	2.3%	105,580	103,512	2,068	2.0%	104,437	102,067	2,370	2.3%
Okeechobee County	18,278	17,742	536	2.9%	18,067	17,615	452	2.5%	17,650	17,116	534	3.0%
Orange County	815,095	793,726	21,369	2.6%	813,664	795,248	18,416	2.3%	787,836	766,429	21,407	2.7%
Osceola County	202,903	196,656	6,247	3.1%	202,430	196,990	5,440	2.7%	196,080	189,788	6,292	3.2%
Palm Beach County	780,423	759,507	20,916	2.7%	776,369	758,518	17,851	2.3%	766,194	745,412	20,782	2.7%
Pasco County	268,097	260,064	8,033	3.0%	266,404	259,558	6,846	2.6%	257,396	250,005	7,391	2.9%
Pinellas County	529,316	516,237	13,079	2.5%	526,349	515,187	11,162	2.1%	508,885	496,311	12,574	2.5%
Polk County	346,362	334,941	11,421	3.3%	346,038	336,329	9,709	2.8%	337,649	326,677	10,972	3.2%
Putnam County	27,969	26,937	1,032	3.7%	27,660	26,784	876	3.2%	27,656	26,602	1,054	3.8%
Santa Rosa County	89,597	87,276	2,321	2.6%	89,176	87,242	1,934	2.2%	87,705	85,540	2,165	2.5%
Sarasota County	201,047	195,561	5,486	2.7%	200,910	196,330	4,580	2.3%	196,649	191,487	5,162	2.6%
Seminole County	271,728	264,784	6,944	2.6%	271,311	265,373	5,938	2.2%	262,535	255,978	6,557	2.5%
St. Johns County	155,405	151,750	3,655	2.4%	154,153	150,999	3,154	2.0%	149,354	146,069	3,285	2.2%
St. Lucie County	160,716	155,695	5,021	3.1%	159,860	155,475	4,385	2.7%	155,824	150,813	5,011	3.2%
Sumter County	38,951	37,499	1,452	3.7%	38,754	37,553	1,201	3.1%	37,255	35,848	1,407	3.8%
Suwannee County	17,960	17,395	565	3.1%	17,709	17,234	475	2.7%	17,554	17,001	553	3.2%
Taylor County	8,325	8,082	243	2.9%	8,161	7,956	205	2.5%	8,203	7,950	253	3.1%
Union County	4,618	4,487	131	2.8%	4,590	4,488	102	2.2%	4,487	4,368	119	2.7%
Volusia County	274,791	266,725	8,066	2.9%	274,136	267,287	6,849	2.5%	264,735	256,961	7,774	2.9%
Wakulla County	16,250	15,858	392	2.4%	16,329	15,985	344	2.1%	15,849	15,471	378	2.4%
Walton County	36,001	35,124	877	2.4%	35,736	34,977	759	2.1%	35,477	34,655	822	2.3%
Washington County	10,118	9,824	294	2.9%	10,045	9,794	251	2.5%	9,797	9,497	300	3.1%
Florida (Not Seasonally Adjusted)	11,022,000	10,726,000	296,000	2.7%	11,012,000	10,759,000	253,000	2.3%	10,741,000	10,449,000	292,000	2.7%
Florida (Seasonally Adjusted)	10,998,000	10,711,000	287,000	2.6%	10,960,000	10,679,000	281,000	2.6%	10,752,000	10,442,000	309,000	2.9%
United States (Not Seasonally Adjusted)	166,702,000	161,002,000	5,700,000	3.4%	166,221,000	161,075,000	5,146,000	3.1%	164,157,000	158,609,000	5,548,000	3.4%
United States (Seasonally Adjusted)	166,818,000	160,721,000	6,097,000	3.7%	166,688,000	161,031,000	5,657,000	3.4%	164,278,000	158,299,000	5,979,000	3.6%

Released: Friday, June 16, 2023

NOTE: Items may not add to totals or compute to displayed percentages due to rounding. All data are subject to revision.

Source: U.S. Department of Labor, Bureau of Labor Statistics, Local Area Unemployment Statistics Program, in cooperation with the Florida Department of Economic Opportunity, Bureau of Workforce Statistics and Economic Research.

STATE OF FLORIDA  
LOCAL AREA UNEMPLOYMENT STATISTICS BY METROPOLITAN STATISTICAL AREA (MSA) AND METROPOLITAN DIVISION (MD)  
(NOT SEASONALLY ADJUSTED)

MSA/MD	MAY 2023				APRIL 2023				MAY 2022			
	LABOR FORCE	EMPLOYMENT	UNEMPLOYMENT LEVEL	UNEMPLOYMENT RATE	LABOR FORCE	EMPLOYMENT	UNEMPLOYMENT LEVEL	UNEMPLOYMENT RATE	LABOR FORCE	EMPLOYMENT	UNEMPLOYMENT LEVEL	UNEMPLOYMENT RATE
Cape Coral-Fort Myers MSA	388,267	377,322	10,945	2.8%	389,096	379,656	9,440	2.4%	373,187	363,218	9,969	2.7%
Crestview-Fort Walton Beach-Destin MSA	142,421	139,133	3,288	2.3%	141,316	138,489	2,827	2.0%	139,914	136,722	3,192	2.3%
Deltona-Daytona Beach-Ormond Beach MSA	327,073	317,267	9,806	3.0%	326,206	317,870	8,336	2.6%	314,916	305,579	9,337	3.0%
Gainesville MSA	151,589	147,277	4,312	2.8%	154,623	150,968	3,655	2.4%	147,168	143,163	4,005	2.7%
Homosassa Springs MSA	51,179	49,189	1,990	3.9%	50,579	48,866	1,713	3.4%	49,772	47,902	1,870	3.8%
Jacksonville MSA	863,317	840,291	23,026	2.7%	857,075	837,302	19,773	2.3%	829,772	807,682	22,090	2.7%
Lakeland-Winter Haven MSA	346,362	334,941	11,421	3.3%	346,038	336,329	9,709	2.8%	337,649	326,677	10,972	3.2%
Miami-Fort Lauderdale-West Palm Beach MSA	3,231,004	3,151,982	79,022	2.4%	3,246,207	3,178,607	67,600	2.1%	3,194,817	3,111,287	83,530	2.6%
Fort Lauderdale-Pompano Beach-Deerfield Beach MD	1,086,370	1,057,751	28,619	2.6%	1,082,552	1,057,893	24,659	2.3%	1,065,995	1,037,185	28,810	2.7%
Miami-Miami Beach-Kendall MD	1,364,211	1,334,724	29,487	2.2%	1,387,286	1,362,196	25,090	1.8%	1,362,628	1,328,690	33,938	2.5%
West Palm Beach-Boca Raton-Delray Beach MD	780,423	759,507	20,916	2.7%	776,369	758,518	17,851	2.3%	766,194	745,412	20,782	2.7%
Naples-Immokalee-Marco Island MSA	190,375	185,538	4,837	2.5%	191,132	187,080	4,052	2.1%	190,922	186,281	4,641	2.4%
North Port-Sarasota-Bradenton MSA	392,875	382,156	10,719	2.7%	392,466	383,389	9,077	2.3%	383,657	373,540	10,117	2.6%
Ocala MSA	152,015	146,978	5,037	3.3%	151,228	146,926	4,302	2.8%	148,254	143,431	4,823	3.3%
Orlando-Kissimmee-Sanford MSA	1,465,806	1,426,274	39,532	2.7%	1,463,192	1,429,145	34,047	2.3%	1,416,644	1,377,528	39,116	2.8%
Palm Bay-Melbourne-Titusville MSA	303,433	295,104	8,329	2.7%	301,611	294,518	7,093	2.4%	295,209	287,269	7,940	2.7%
Panama City MSA	96,095	93,801	2,294	2.4%	95,511	93,543	1,968	2.1%	93,813	91,553	2,260	2.4%
Pensacola-Ferry Pass-Brent MSA	241,876	235,319	6,557	2.7%	240,864	235,327	5,537	2.3%	237,113	230,710	6,403	2.7%
Port St. Lucie MSA	239,044	232,026	7,018	2.9%	237,890	231,813	6,077	2.6%	232,169	225,251	6,918	3.0%
Punta Gorda MSA	78,529	76,145	2,384	3.0%	78,522	76,447	2,075	2.6%	76,763	74,480	2,283	3.0%
Sebastian-Vero Beach MSA	68,692	66,491	2,201	3.2%	68,638	66,778	1,860	2.7%	68,299	66,092	2,207	3.2%
Sebring MSA	36,952	35,490	1,462	4.0%	36,824	35,630	1,194	3.2%	36,169	34,806	1,363	3.8%
Tallahassee MSA	203,941	198,041	5,900	2.9%	204,596	199,549	5,047	2.5%	199,551	193,774	5,777	2.9%
Tampa-St. Petersburg-Clearwater MSA	1,712,038	1,666,177	45,861	2.7%	1,701,993	1,662,809	39,184	2.3%	1,644,505	1,601,095	43,410	2.6%
The Villages MSA	38,951	37,499	1,452	3.7%	38,754	37,553	1,201	3.1%	37,255	35,848	1,407	3.8%
Florida (Not Seasonally Adjusted)	11,022,000	10,726,000	296,000	2.7%	11,012,000	10,759,000	253,000	2.3%	10,741,000	10,449,000	292,000	2.7%
Florida (Seasonally Adjusted)	10,998,000	10,711,000	287,000	2.6%	10,960,000	10,679,000	281,000	2.6%	10,752,000	10,442,000	309,000	2.9%
United States (Not Seasonally Adjusted)	166,702,000	161,002,000	5,700,000	3.4%	166,221,000	161,075,000	5,146,000	3.1%	164,157,000	158,609,000	5,548,000	3.4%
United States (Seasonally Adjusted)	166,818,000	160,721,000	6,097,000	3.7%	166,688,000	161,031,000	5,657,000	3.4%	164,278,000	158,299,000	5,979,000	3.6%

Released: Friday, June 16, 2023

NOTE: Items may not add to totals or compute to displayed percentages due to rounding. All data are subject to revision.

Source: U.S. Department of Labor, Bureau of Labor Statistics, Local Area Unemployment Statistics Program, in cooperation with the Florida Department of Economic Opportunity, Bureau of Workforce Statistics and Economic Research.

STATE OF FLORIDA  
COUNTIES RANKED BY UNEMPLOYMENT RATE  
(NOT SEASONALLY ADJUSTED)  
MAY 2023 (PRELIMINARY)

1	Hendry County	4.1%
2	Highlands County	4.0%
3	Citrus County	3.9%
4	Hamilton County	3.7%
4	Putnam County	3.7%
4	Sumter County	3.7%
7	Gadsden County	3.5%
7	Hardee County	3.5%
9	Hernando County	3.4%
	<b>United States</b>	<b>3.4%</b>
10	Flagler County	3.3%
10	Marion County	3.3%
10	Polk County	3.3%
13	Gilchrist County	3.2%
13	Indian River County	3.2%
15	Dixie County	3.1%
15	Glades County	3.1%
15	Jackson County	3.1%
15	Levy County	3.1%
15	Osceola County	3.1%
15	St. Lucie County	3.1%
15	Suwannee County	3.1%
22	Charlotte County	3.0%
22	Columbia County	3.0%
22	DeSoto County	3.0%
22	Pasco County	3.0%
26	Jefferson County	2.9%
26	Leon County	2.9%
26	Okeechobee County	2.9%
26	Taylor County	2.9%
26	Volusia County	2.9%
26	Washington County	2.9%
32	Alachua County	2.8%
32	Calhoun County	2.8%
32	Duval County	2.8%
32	Escambia County	2.8%
32	Holmes County	2.8%
32	Lafayette County	2.8%
32	Lake County	2.8%
32	Lee County	2.8%
32	Liberty County	2.8%

STATE OF FLORIDA  
COUNTIES RANKED BY UNEMPLOYMENT RATE  
(NOT SEASONALLY ADJUSTED)  
MAY 2023 (PRELIMINARY)

32	Madison County	2.8%
32	Union County	2.8%
43	Baker County	2.7%
43	Bradford County	2.7%
43	Brevard County	2.7%
43	Manatee County	2.7%
43	Palm Beach County	2.7%
43	Sarasota County	2.7%
	<b>Florida</b>	<b>2.7%</b>
49	Broward County	2.6%
49	Clay County	2.6%
49	Hillsborough County	2.6%
49	Orange County	2.6%
49	Santa Rosa County	2.6%
49	Seminole County	2.6%
55	Collier County	2.5%
55	Franklin County	2.5%
55	Martin County	2.5%
55	Nassau County	2.5%
55	Pinellas County	2.5%
60	Bay County	2.4%
60	St. Johns County	2.4%
60	Wakulla County	2.4%
60	Walton County	2.4%
64	Gulf County	2.3%
64	Okaloosa County	2.3%
66	Miami-Dade County	2.2%
67	Monroe County	1.7%

Source: U.S. Department of Labor, Bureau of Labor Statistics, Local Area Unemployment Statistics Program, in cooperation with the Florida Department of Economic Opportunity, Bureau of Workforce Statistics and Economic Research.  
Released: June 16, 2023

NOTE: All data are subject to revision.

STATE OF FLORIDA  
 METROPOLITAN STATISTICAL AREAS (MSAs) AND METROPOLITAN DIVISIONS (MDs)  
 RANKED BY UNEMPLOYMENT RATE  
 (NOT SEASONALLY ADJUSTED)  
 MAY 2023 (PRELIMINARY)

1	Sebring MSA	4.0%
2	Homosassa Springs MSA	3.9%
3	The Villages MSA	3.7%
	<b>United States</b>	<b>3.4%</b>
4	Lakeland-Winter Haven MSA	3.3%
4	Ocala MSA	3.3%
6	Sebastian-Vero Beach MSA	3.2%
7	Deltona-Daytona Beach-Ormond Beach MSA	3.0%
7	Punta Gorda MSA	3.0%
9	Port St. Lucie MSA	2.9%
9	Tallahassee MSA	2.9%
11	Cape Coral-Fort Myers MSA	2.8%
11	Gainesville MSA	2.8%
13	Jacksonville MSA	2.7%
13	North Port-Sarasota-Bradenton MSA	2.7%
13	Orlando-Kissimmee-Sanford MSA	2.7%
13	Palm Bay-Melbourne-Titusville MSA	2.7%
13	Pensacola-Ferry Pass-Brent MSA	2.7%
13	Tampa-St. Petersburg-Clearwater MSA	2.7%
13	West Palm Beach-Boca Raton-Delray Beach MD	2.7%
	<b>Florida</b>	<b>2.7%</b>
20	Fort Lauderdale-Pompano Beach-Deerfield Beach MD	2.6%
21	Naples-Immokalee-Marco Island MSA	2.5%
22	Panama City MSA	2.4%
23	Crestview-Fort Walton Beach-Destin MSA	2.3%
24	Miami-Miami Beach-Kendall MD	2.2%

Released: Friday, June 16, 2023

NOTE: All data are subject to revision.

TOTAL NONAGRICULTURAL EMPLOYMENT  
FLORIDA (Not Seasonally Adjusted)

Area	May 2023	April 2023	May 2022	Over-the-Month Change		Over-the-Year Change	
				Level	Percent	Level	Percent
Statewide	9,719,200	9,717,800	9,387,700	1,400	*	331,500	3.5%
Cape Coral-Fort Myers MSA	310,600	312,100	297,600	-1,500	-0.5%	13,000	4.4%
Crestview-Fort Walton Beach-Destin MSA	131,400	130,500	128,700	900	0.7%	2,700	2.1%
Deltona-Daytona Beach-Ormond Beach MSA	225,300	225,500	216,400	-200	-0.1%	8,900	4.1%
Fort Lauderdale-Pompano Beach-Deerfield Beach MD	901,900	901,500	884,900	400	*	17,000	1.9%
Gainesville MSA	153,300	156,300	149,000	-3,000	-1.9%	4,300	2.9%
Homosassa Springs MSA	36,300	35,900	35,100	400	1.1%	1,200	3.4%
Jacksonville MSA	800,100	797,400	768,300	2,700	0.3%	31,800	4.1%
Lakeland-Winter Haven MSA	271,300	271,900	264,300	-600	-0.2%	7,000	2.6%
Miami-Ft. Lauderdale-West Palm Beach MSA	2,888,000	2,876,800	2,804,400	11,200	0.4%	83,600	3.0%
Miami-Miami Beach-Kendall MD	1,301,800	1,293,700	1,250,700	8,100	0.6%	51,100	4.1%
Naples-Immokalee-Marco Island MSA	165,800	166,800	165,800	-1,000	-0.6%	0	0.0%
North Port-Sarasota-Bradenton MSA	335,300	335,900	326,300	-600	-0.2%	9,000	2.8%
Ocala MSA	119,500	119,100	115,800	400	0.3%	3,700	3.2%
Orlando-Kissimmee-Sanford MSA	1,434,400	1,437,000	1,384,100	-2,600	-0.2%	50,300	3.6%
Palm Bay-Melbourne-Titusville MSA	248,700	248,100	241,300	600	0.2%	7,400	3.1%
Panama City MSA	87,900	87,500	85,500	400	0.5%	2,400	2.8%
Pensacola-Ferry Pass-Brent MSA	197,500	197,300	193,000	200	0.1%	4,500	2.3%
Port St. Lucie MSA	171,600	171,000	165,400	600	0.4%	6,200	3.7%
Punta Gorda MSA	55,500	55,500	53,800	0	0.0%	1,700	3.2%
Sebastian-Vero Beach MSA	57,200	57,400	56,600	-200	-0.3%	600	1.1%
Sebring MSA	27,600	27,700	26,800	-100	-0.4%	800	3.0%
Tallahassee MSA	195,900	197,200	191,400	-1,300	-0.7%	4,500	2.4%
Tampa-St. Petersburg-Clearwater MSA	1,534,900	1,530,400	1,471,600	4,500	0.3%	63,300	4.3%
The Villages MSA	39,700	39,900	37,900	-200	-0.5%	1,800	4.7%
West Palm Beach-Boca Raton-Delray Beach MD	684,300	681,600	668,800	2,700	0.4%	15,500	2.3%

\* - less than 0.1 percent

Note: Employment estimates have been rounded to the nearest hundred. Sum of detail may not equal totals due to rounding or the exclusion of certain industries from publication. All data are subject to revision. June 16, 2023.

Source: U.S. Department of Labor, Bureau of Labor Statistics, Current Employment Statistics Program.

Prepared by: Florida Department of Economic Opportunity, Bureau of Workforce Statistics and Economic Research.



**Total Nonagricultural Employment**  
**Florida and Selected Metropolitan Statistical Areas (MSAs) and Metropolitan Divisions (MDs)**

**Seasonally Adjusted**

Area	May	April	May	Over-the-Month		Over-the-Year	
	2023	2023	2022	Level	Percent	Level	Percent
Florida	9,726,100	9,708,600	9,379,500	17,500	0.2	346,600	3.7
Cape Coral-Fort Myers MSA	311,000	310,300	298,300	700	0.2	12,700	4.3
Crestview-Fort Walton Beach-Destin MSA	130,600	130,300	127,000	300	0.2	3,600	2.8
Deltona-Daytona Beach-Ormond Beach MSA	224,900	224,800	215,800	100	*	9,100	4.2
Gainesville MSA	154,600	154,400	150,300	200	0.1	4,300	2.9
Homosassa Springs MSA	35,900	35,500	34,800	400	1.1	1,100	3.2
Jacksonville MSA	799,700	799,000	768,000	700	0.1	31,700	4.1
Lakeland-Winter Haven MSA	271,900	271,400	264,100	500	0.2	7,800	3.0
Miami-Ft. Lauderdale-West Palm Beach MSA	2,891,200	2,882,400	2,801,800	8,800	0.3	89,400	3.2
Fort Lauderdale-Pompano Beach-Deerfield Beach MD	904,800	903,600	883,600	1,200	0.1	21,200	2.4
Miami-Miami Beach-Kendall MD	1,303,800	1,297,400	1,251,300	6,400	0.5	52,500	4.2
West Palm Beach-Boca Raton-Delray Beach MD	683,300	680,600	665,400	2,700	0.4	17,900	2.7
Naples-Immokalee-Marco Island MSA	165,000	164,700	165,200	300	0.2	-200	-0.1
North Port-Sarasota-Bradenton MSA	335,300	333,900	326,000	1,400	0.4	9,300	2.9
Ocala MSA	119,600	118,900	115,900	700	0.6	3,700	3.2
Orlando-Kissimmee-Sanford MSA	1,442,200	1,438,700	1,388,300	3,500	0.2	53,900	3.9
Palm Bay-Melbourne-Titusville MSA	249,400	248,400	241,200	1,000	0.4	8,200	3.4
Panama City MSA	87,300	87,100	84,700	200	0.2	2,600	3.1
Pensacola -Ferry Pass-Brent MSA	197,200	196,400	192,100	800	0.4	5,100	2.7
Port St. Lucie MSA	171,300	170,300	164,800	1,000	0.6	6,500	3.9
Punta Gorda MSA	55,500	55,200	54,100	300	0.5	1,400	2.6
Sebastian-Vero Beach MSA	57,200	57,200	56,400	0	0.0	800	1.4
Sebring MSA	27,500	27,500	26,800	0	0.0	700	2.6
Tallahassee MSA	196,800	195,800	192,400	1,000	0.5	4,400	2.3
Tampa - St. Petersburg - Clearwater MSA	1,536,100	1,529,700	1,471,600	6,400	0.4	64,500	4.4
The Villages MSA	39,600	39,600	37,700	0	0.0	1,900	5.0

Released: June 16, 2023

p = preliminary, r = revised

\* - less than 0.1 percent

Source: U.S. Department of Labor, Bureau of Labor Statistics, Current Employment Statistics Program.

Prepared by: Florida Department of Economic Opportunity, Bureau of Workforce Statistics and Economic Research.